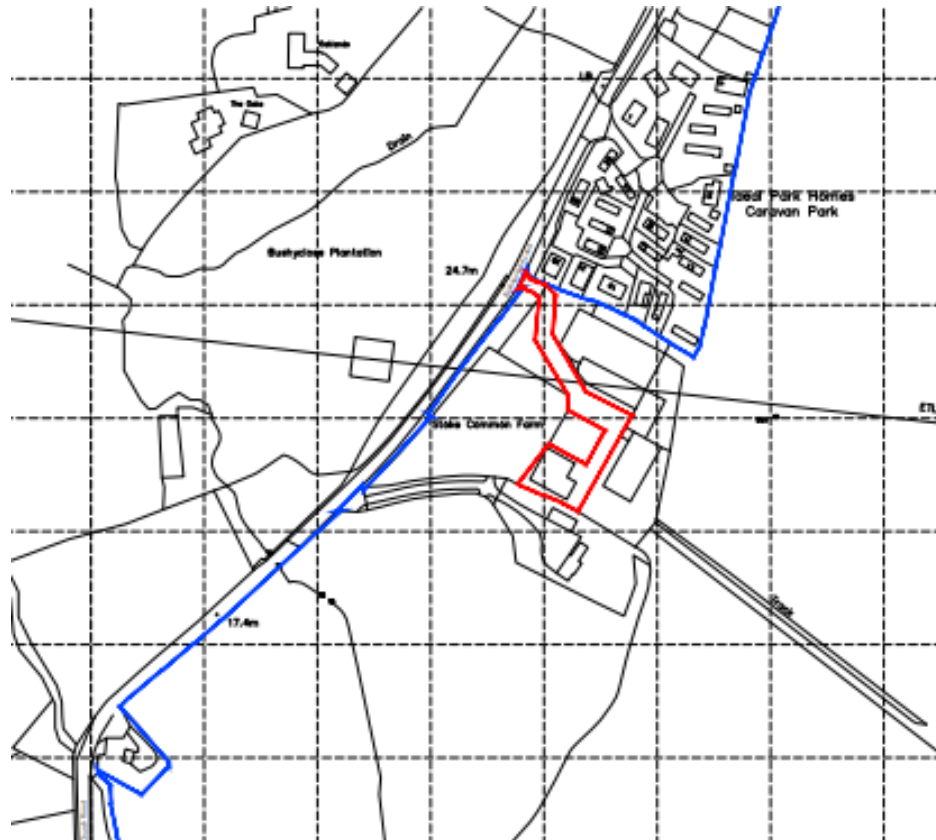
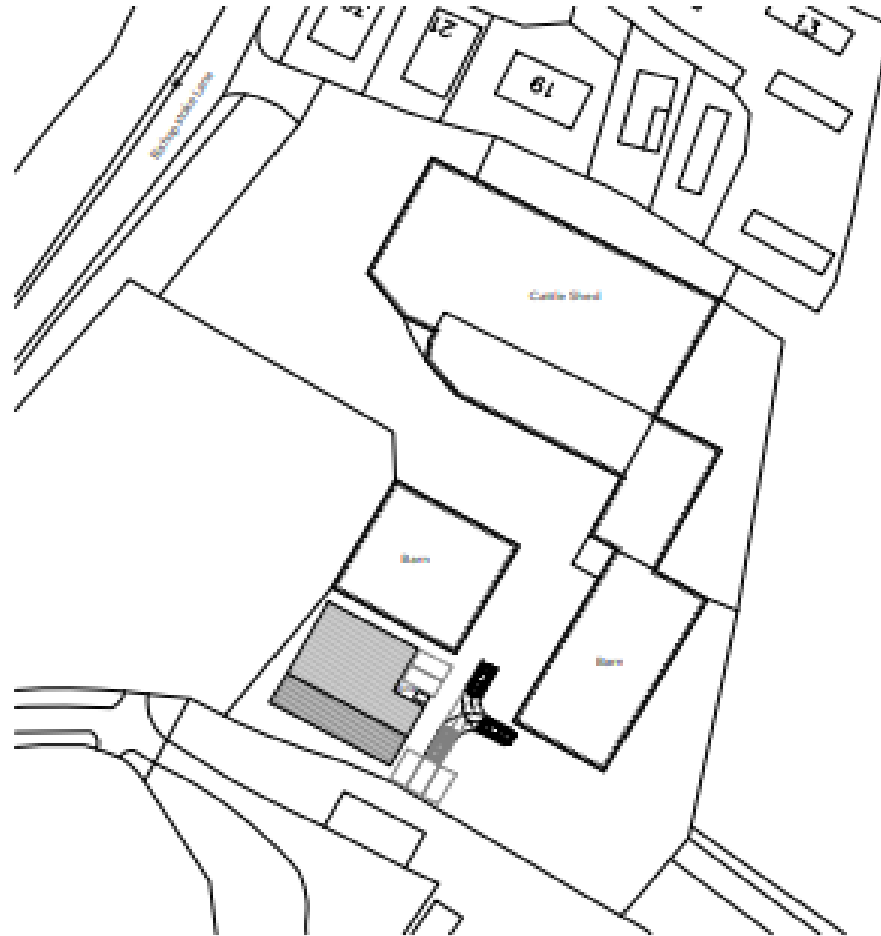


22/01357/FUL Stoke Common Farm, Bishopstoke Lane, Brambridge, Hampshire, SO50 6HX

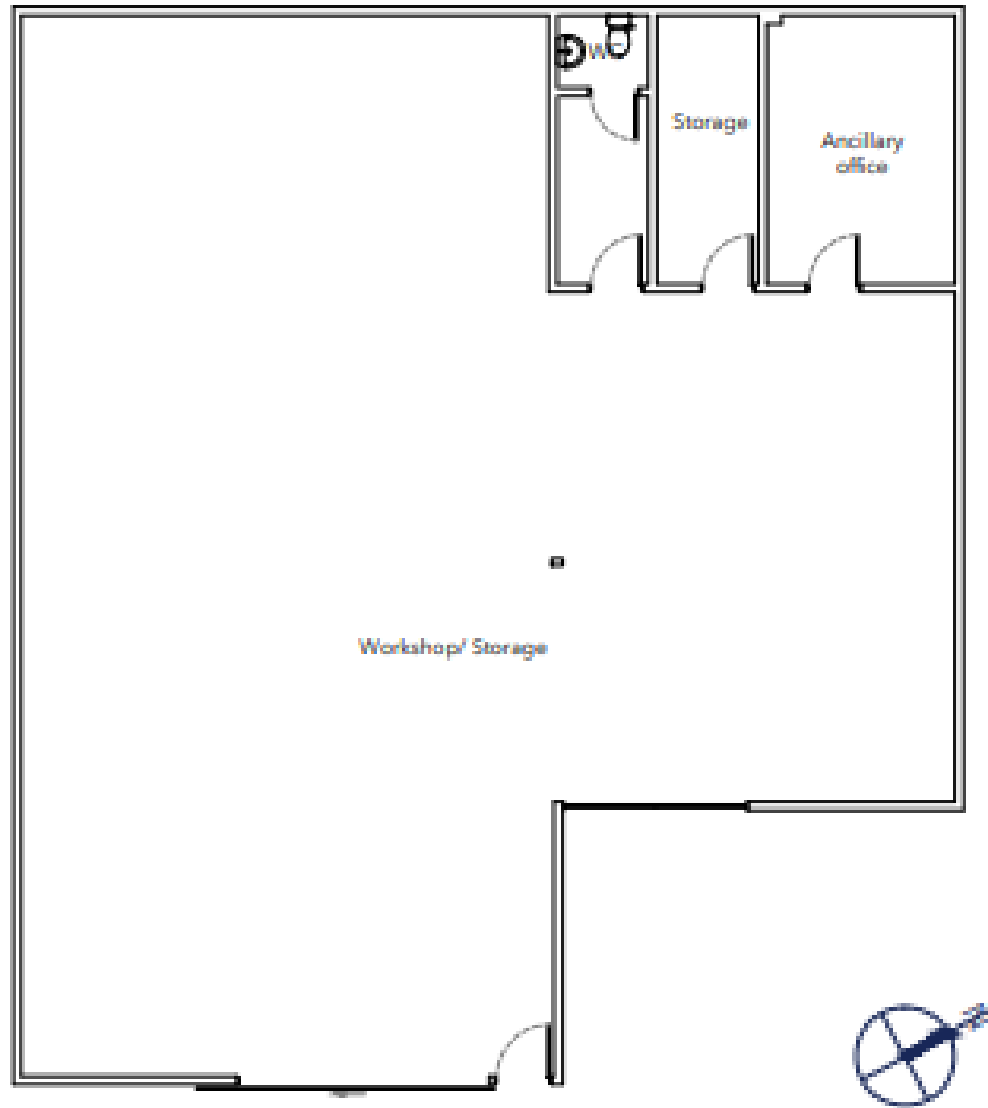
Proposal: Change of use of Agricultural Barn to a mixed use between Light Industrial (Class E (g)(iii)) and Storage & Distribution (Class B8)



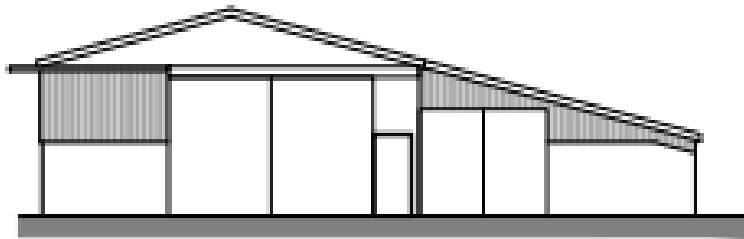
Proposed Site Plan



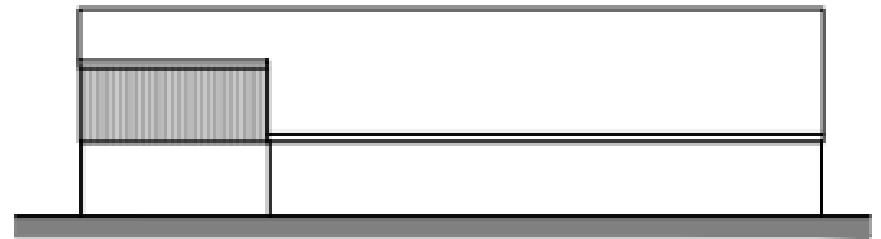
Proposed Floor Plan



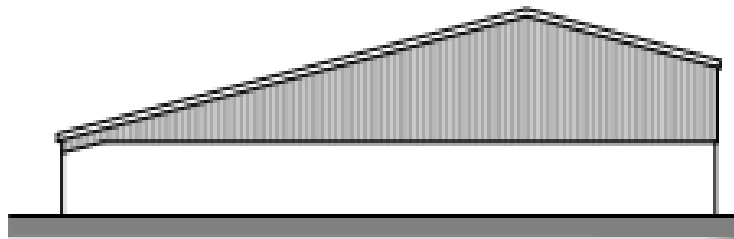
Proposed Elevations (No change from existing)



Front Elevation



Side Elevation 1



Rear Elevation



Side Elevation 2

Site Photographs



South



North

Site Photos



North East



North

Site Photographs



South West



End of Presentation:
Recommendation Permit